

## Thermometer Screening

St. Joseph's has two different types of thermometers for screening core temperatures:



### **EXERGEN TEMPORAL**

Item # 2406  
COVER SHEATHS  
Item # 2410

### **Exergen Temporal**

### **Fisher Infrared Non-Contact**



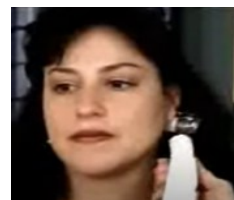
**FISHER**  
**Infrared Non-Contact**  
Item # 60297



**STEP 1**  
Press Button on thermometer (keep button depressed for all three steps) and place at the center of the forehead.



**STEP 2**  
Glide thermometer across the forehead toward the temporal, just to the hairline (remember to keep holding the button down on the thermometer).



**STEP 3**  
Lift the thermometer from the temporal and place on the neck, just behind the earlobe. Release the button and read the temperature.



**STEP 1**  
Aim non-contact thermometer at the center of the forehead .  
**DO NOT TOUCH FOREHEAD**  
( 3 to 6 inches away)

**STEP 2**  
Hold steady and gently squeeze the button on the thermometer handle and read the temperature.